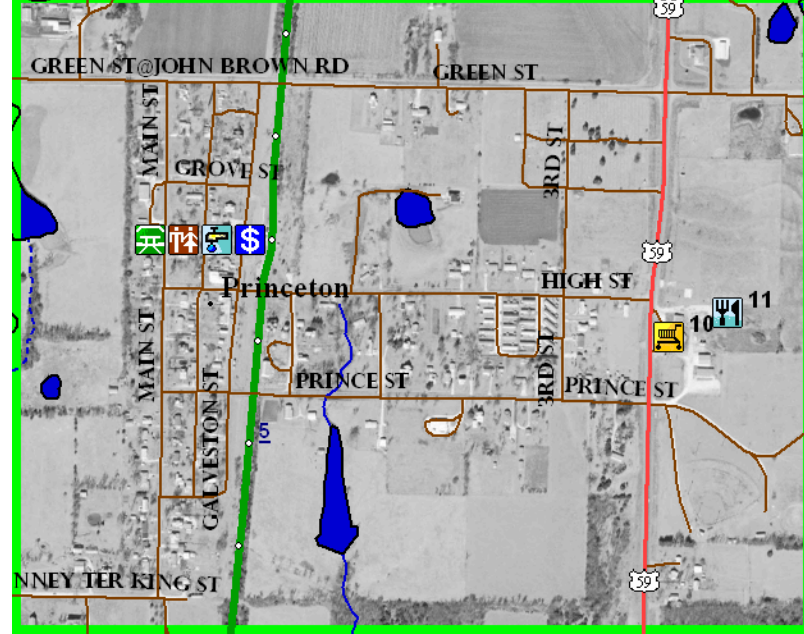
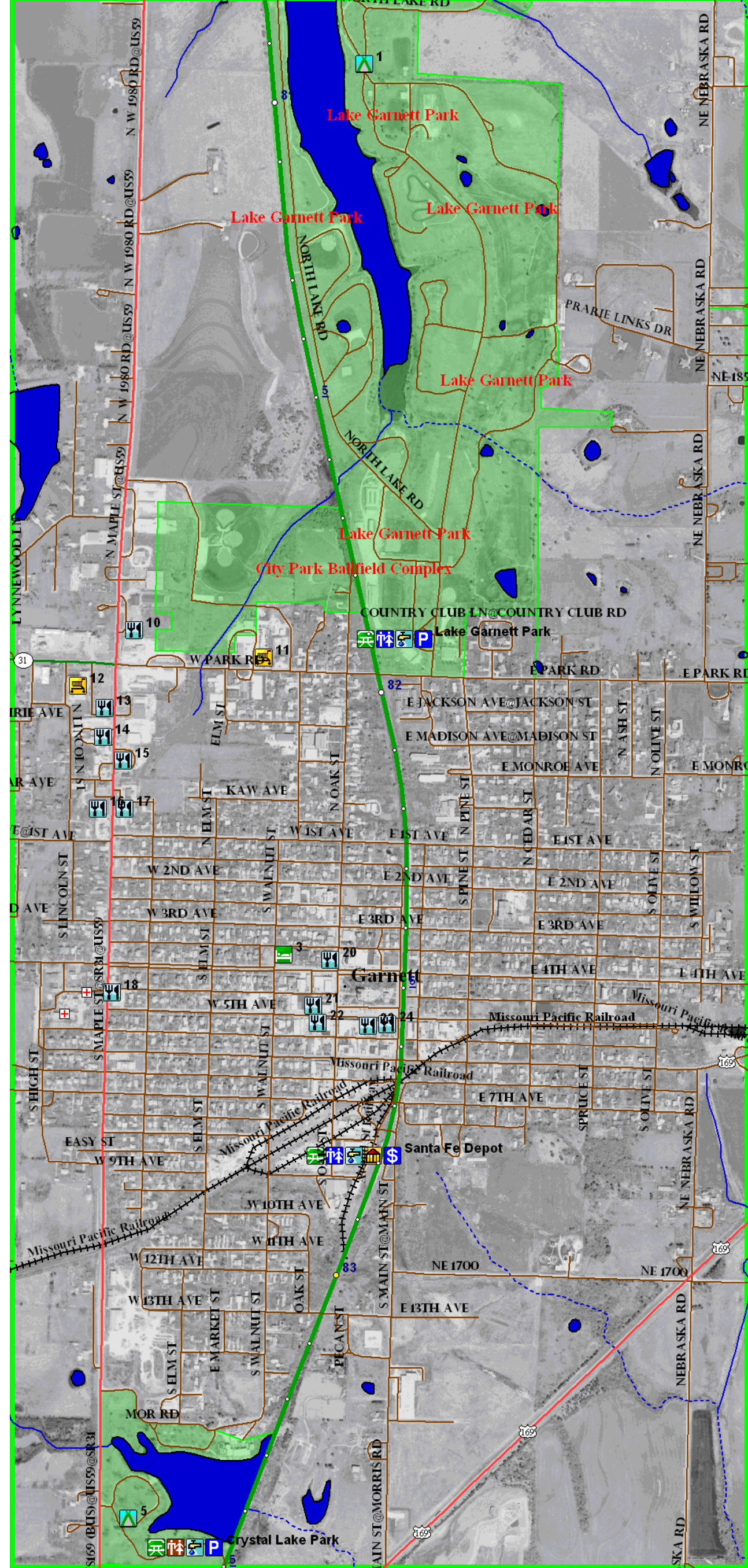
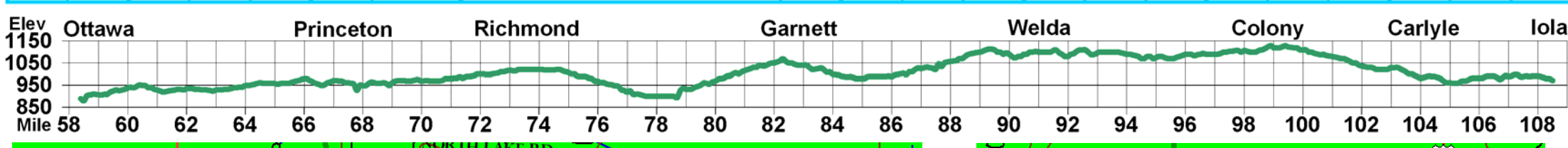


# Prairie Spirit Trail

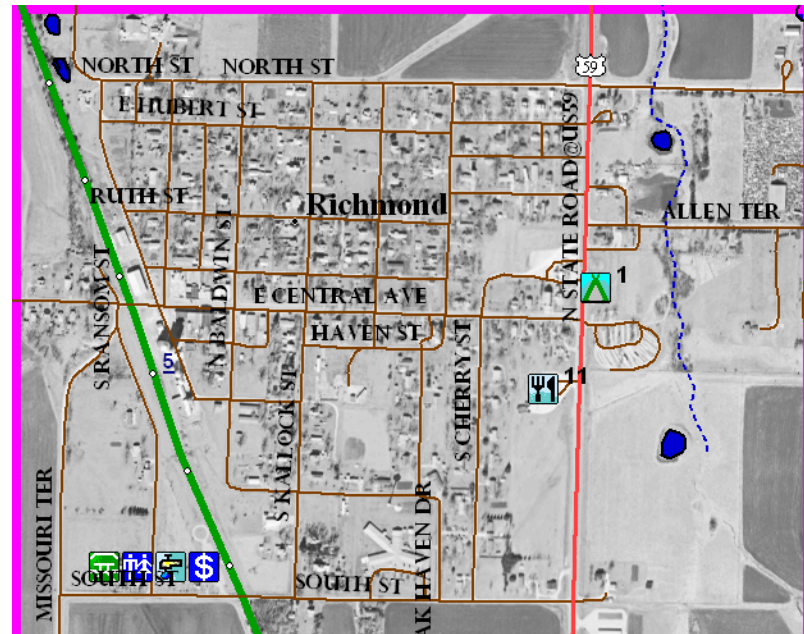
Banked Railroad Corridor of the Kansas City Terminal Railway (KCT)  
Formerly operated by the Atchison, Topeka and Santa Fe (AT&SF) Railroad  
Managed by Kansas Department of Wildlife and Parks

Self Issue Permit Station	Lodging (Motel, RV, Tent)	Nearby Food (Restaurant, Store)	Shelter (Building, Shelter)	Picnic (Table, Grill)	Toilet (Flush, Pit)	Water (Chilled fountain, Fountain, Tap)	Location	Mile Post
-	RS	B	-	F	C		Ottawa Depot	58.4
M	RS	-	-	-	-	-	Ottawa Kanza Park 13th St	59.9
\$	M	RS	S	TG	-	F	Ottawa Trail Head	60.6
\$	R	RS	S	T	P	F	Princeton Trail Head	67.3
\$	R	RS	S	T	P	FT	Richmond Trail Head	73.7
\$	MRT	RS	BS	TG	F	FT	Garnett - Lake Garnett Park	81.8
\$	M	RS	BS	TG	F	C	Garnett Depot	82.8
\$	-	S	T	P	FT	-	Garnett - Crystal Lake Park	83.5
\$	-	S	T	P	FT	-	Welda Trail Head	91.0
\$	-	RS	S	T	P	FT	Colony Trail Head	98.8
\$	-	S	T	P	-	-	Carlyle Trail Head	104.3
\$	M	RS	S	T	-	-	Iola Trail Head	108.6



**67.29 Princeton Trail Head**  
Public Parking - paved  
Public Rest Rooms - pit toilet  
Drinking Water - fountain  
Shelter  
Picnic Table

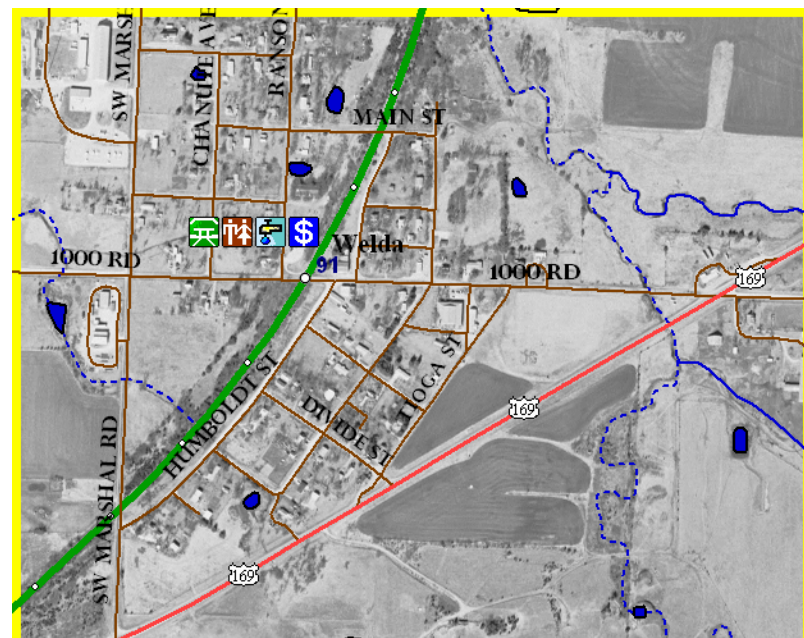
**Nearby Food**  
10 Princeton Quick Stop  
1445 Hwy 59  
785-937-2061  
11 Brand N Iron Bar & Grill  
1457 59 Hwy  
785-937-2225



**73.68 Richmond Trail Head**  
Public Parking - paved  
Drinking Water - flush  
Drinking Water - fountain, tap  
Shelter  
Picnic Table

**Nearby Food**  
11 R&B's Fast Food & Groceries  
120 S State Rd  
785-835-6474

**Lodging**  
1 V & PRV Park  
532 E South St  
785-835-6369



**90.99 Welda Trail Head**  
Public Parking - gravel  
Public Rest Rooms - pit toilet  
Drinking Water - fountain, tap  
Shelter  
Picnic Table

**81.80 Lake Garnett Park**  
Public Parking - gravel  
Public Rest Rooms - flush  
Drinking Water - fountain, tap  
Shelter  
Picnic Table, Grill

**82.78 Santa Fe Depot**  
Public Parking - paved  
Public Rest Rooms - flush  
Drinking Water - chilled  
Shelter  
Picnic Table, Grill

**83.48 Crystal Lake Park**  
Public Parking - gravel  
Public Rest Rooms - pit toilet  
Drinking Water - tap  
Shelter  
Picnic Table, Grill

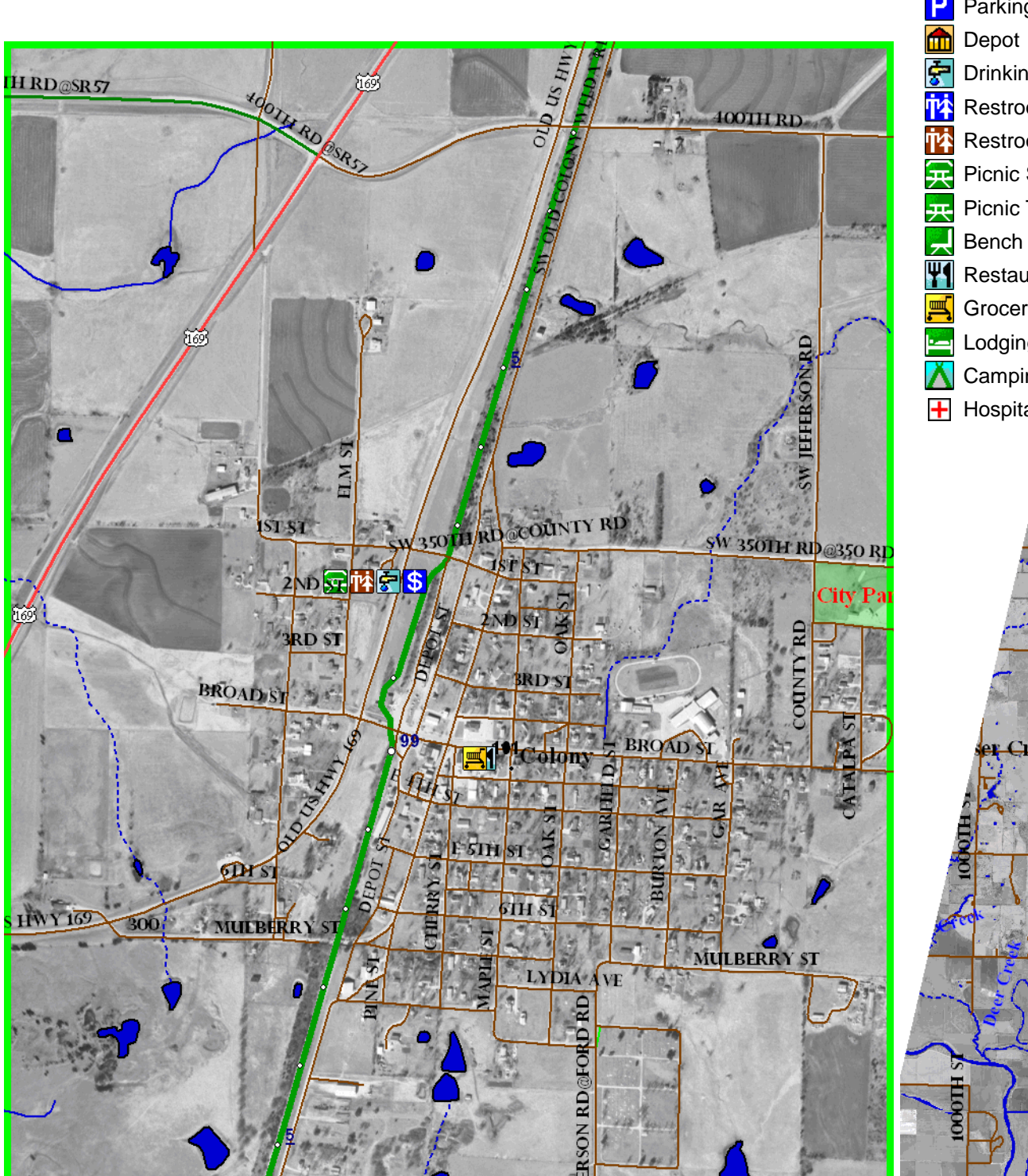
**Nearby Food**  
10 Simple Simon's Pizza  
580 North Maple St  
785-448-6582  
11 Casey's General Store  
219 W Park Rd  
785-448-9722  
12 Country Mart  
425 North Maple St  
785-448-2121  
13 Pizza Hut Wingstreet  
405 North Maple St  
785-448-3465  
14 Mr D's  
311 North Maple  
785-448-3040  
15 Dairy Queen  
212 North Maple St  
785-448-5800  
16 Subway Sandwich and Salad  
109 North Maple St  
785-448-7070

**Nearby Food**  
17 Sonic Drive-In  
106 North Maple St  
785-448-6393  
18 Red Wheat Diner  
420 South Maple St  
785-448-0632  
20 Maloon's Bar & Grille  
101 West 4th Ave  
785-448-2616  
21 China Restaurant  
115 West 5th Ave  
785-448-6896  
22 Trade Winds Bar & Grill  
110 West 5th Ave  
785-449-5856  
23 La Hacienda  
122 E 5th Ave  
785-448-0014  
24 Denise's Country Café  
140 East 5th Ave  
785-449-2233

**Lodging**  
1 Lake Garnett - camping  
245 East Park Rd  
785-448-5496 (6823 night)  
3 Kirk House B&B  
145 West 4th Ave  
785-448-5813  
4 Garnett Inn Suites & RV Park  
109 Prairie Plaza  
785-448-6800  
5 Crystal Lake - RV camping  
1158 S Maple St (US 59)  
785-448-5496 (6823 night)

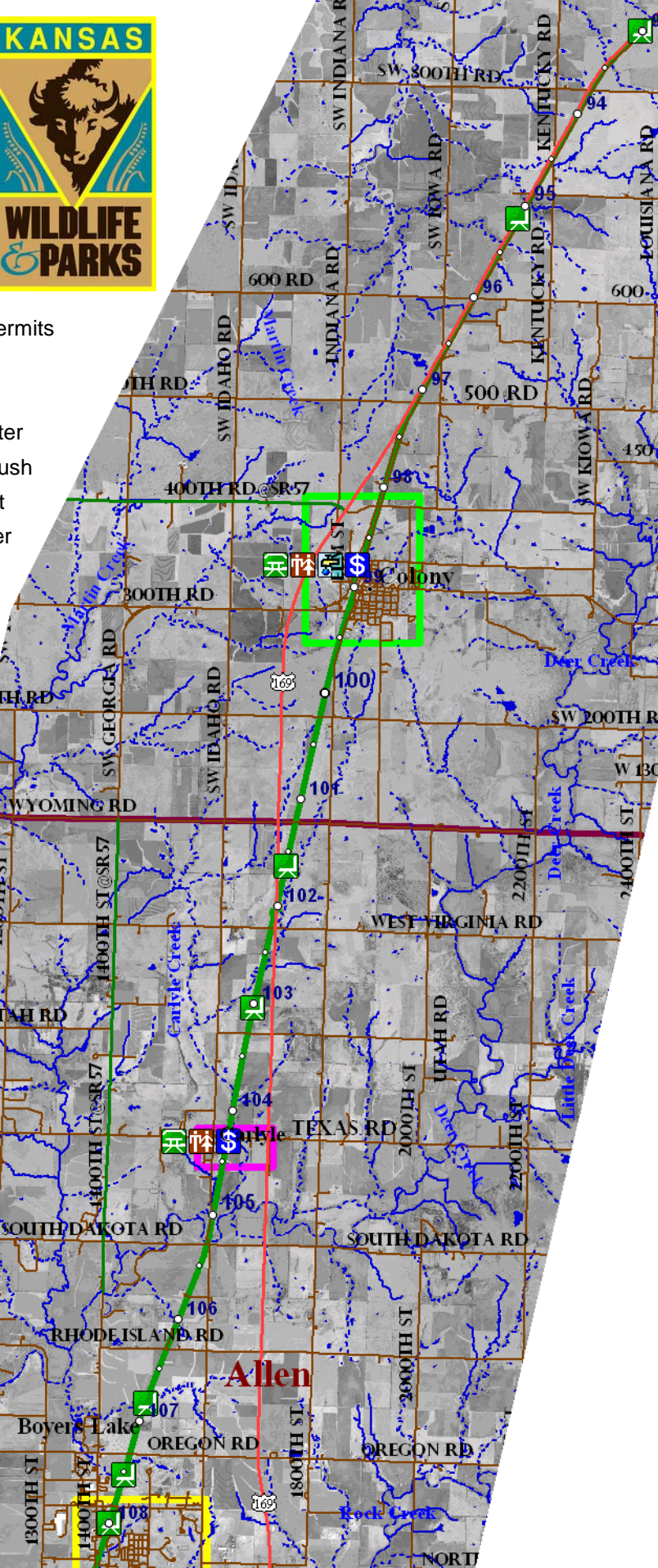
**Scipio Food**  
Scipio Supper Club  
32465 NE Neosho Rd  
785-835-6246

Trail managed by  
**Kansas Department of Wildlife and Parks**  
Trail Office  
419 South Oak  
Garnett, KS 66032  
785-448-6767  
www.kdwp.state.ks.us



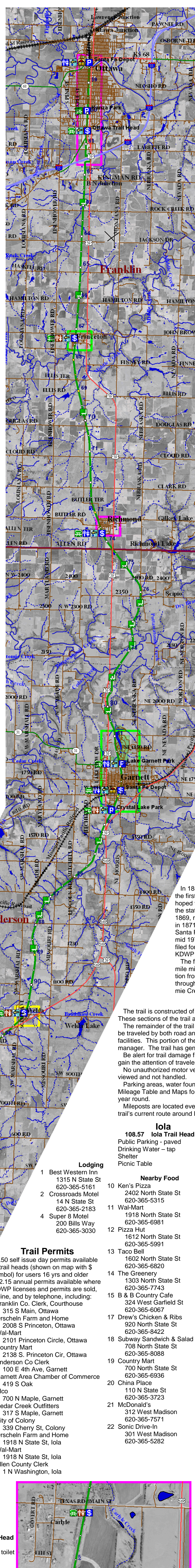
**98.78 Colony Trail Head**  
Public Parking - gravel  
Public Rest Rooms - pit toilet  
Drinking Water - fountain, tap  
Shelter  
Picnic Table

**Nearby Food**  
10 Colony Foods  
212 East Broad St  
620-852-3331  
11 Country Diner  
214 E Broad St  
620-852-3007



**Allen**  
Public Parking - gravel  
Public Rest Rooms - pit toilet  
Shelter  
Picnic Table

**Carlyle**  
Public Parking - gravel  
Public Rest Rooms - pit toilet  
Shelter  
Picnic Table



**Lodging**  
1 Best Western Inn  
1315 N State St  
620-365-5161  
2 Crossroads Motel  
14 N State St  
620-365-2183  
4 Super 8 Motel  
200 Bills Way  
620-365-3030

**Trail Permits**  
\$3.50 self issue day permits available at trail heads (shown on map with \$ symbol) for users 16 yrs and older  
\$12.15 annual permits available where KDWP licenses and permits are sold, online, and by telephone, including:  
Franklin Co. Clerk, Courthouse  
315 S Main, Ottawa  
Orscheln Farm and Home  
2008 S Princeton, Ottawa  
Wal-Mart  
2101 Princeton Circle, Ottawa  
Country Mart  
2138 S. Princeton Cir, Ottawa  
Anderson Co Clerk  
100 E 4th Ave, Garnett  
Garnett Area Chamber of Commerce  
1918 N State St, Iola  
Alco  
700 N Maple, Garnett  
Cedar Creek Outfitters  
317 S Maple, Garnett  
City of Colony  
339 Cherry St, Colony  
Orscheln Farm and Home  
301 West Madison  
1918 N State St, Iola  
Wal-Mart  
1918 N State St, Iola  
Allen County Clerk  
1 N Washington, Iola

**Ottawa**  
58.35 Santa Fe Depot  
Public Parking - paved  
Public Rest Rooms - flush  
Drinking Water - chilled  
Building

**Nearby Food**  
11 Blue Star Cafe  
405 North St  
785-242-1580  
12 Dairy Queen  
212 North Main St  
785-242-4974  
13 Pizza Time  
133 South Main St  
785-242-8463  
16 Maria's Mexican  
314 South Main St  
785-242-0200  
17 Pizza Village  
330 South Main St  
785-242-4515  
18 El Mezcal  
402 South Main St  
785-242-2259  
19 Ponchos of Ottawa  
429 South Main St  
785-242-8227

59.94 Kanza Park 13th St  
Public Parking - paved  
Picnic Table

**Nearby Food**  
22 Subway  
902 South Main St  
785-242-6006  
23 China Palace Restaurant  
910 S Main St  
785-242-6818  
24 Dairy Queen  
1444 South Main St  
785-242-4506  
25 Sonic Drive-In  
1535 South Main  
785-242-7727  
26 The Sandbar  
1608 South Main  
785-242-8888

**60.58 Ottawa Trail Head**  
Public Parking - paved  
Drinking Water - fountain, tap  
Shelter  
Picnic Table, Grill

**Nearby Food**  
30 Kentucky Fried Chicken  
2121 South Princeton St  
785-242-3200  
31 Country Mart  
2138 S Princeton Circle Dr  
785-242-5885  
32 Long John Silvers  
2140 Princeton Circle  
Drive  
785-242-3403  
33 Wal-Mart  
2101 South Princeton St  
785-242-9222  
34 McDonald's  
2214 Princeton Circle  
Drive  
785-242-4451  
35 Old 56 Family Restaurant  
2227 South Princeton St  
785-242-7757  
36 Sirion Stockade  
2230 South Princeton St  
785-242-4329  
37 Burger King  
601 East 23rd St  
785-242-1507  
40 Taco Bell  
2304 South Princeton St  
785-242-9032  
41 Wendy's  
2310 South Cedar  
785-242-3410  
42 Pizza Hut  
2314 South Princeton St  
785-242-1212  
43 Applebees  
2340 South Oak  
785-242-2297

**Lodging**  
1 Days Inn  
1641 South Main St  
785-242-4842  
2 Travelodge  
2209 South Princeton St  
785-242-7000  
3 Best Western  
606 East 23rd St  
785-242-2224  
4 Super 8  
2315 South Oak St  
785-242-5551  
5 Econo Lodge  
2331 South Cedar St  
785-242-3400  
6 Comfort Inn  
2335 South Oak St  
785-242-9898

**History**  
In 1858, the founders of the Leavenworth, Lawrence and Fort Gibson (later Galveston) Railroad (LL&G) planned the first north-south rail line in Kansas from Leavenworth, Kansas to Galveston, Texas. Investors and politicians hoped to move the economic base from Kansas City, Missouri to Lawrence, Kansas bringing wealth and prestige to the state. Construction began in Lawrence in 1867, was operational into Ottawa in 1868 and arrived in Garnett in 1869, resulting in rapid growth for each of the towns. The line continued through Iola, Chanute and into Coffeyville in 1871. In the late 1870's, the LL&G went bankrupt and the line was purchased by the Atchison, Topeka and Santa Fe Railroad and began operating under their name in the early 1880's. The AT&SF purchased the line until the mid 1970's and in 1990 they sold to the Kansas City Terminal Railway Company (KCT). The same year the KCT filed for abandonment and Kansas Department of Wildlife and Parks filed for public use. Title was transferred to KDWP for development into a recreational rail-trail in 1992.

The fifty-one mile Prairie Spirit Trail was constructed between Ottawa and Iola in three phases. The seventeen-mile middle section from Richmond through Garnett to Welda was opened in 1996. The northern sixteen-mile section from Ottawa through Princeton to Richmond opened in 1998. The southern eighteen-mile section from Welda through Colony to Iola opened in 2008. Floods in summer 2007 washed away a span of the bridge over Pottawatomie Creek. Two and a half miles of the trail from Scipio Rd (2350 Rd) south to 2100 Road were closed for repairs.

**Travel on the Trail**  
The trail is constructed of two different surfaces. Within the city limits of Ottawa, Garnett and Iola the trail is a paved asphalt surface. These sections of the trail are open for use at anytime and no permit is required for use.  
The remainder of the trail is a crushed limestone surface. The trail is between eight and twelve feet wide in areas. The surface can be traveled by both road and mountain bikes and is ADA accessible. A permit is required to use this part of the trail and the trailhead facilities. This portion of the trail is only open during daylight hours. A special night permit is available for night travel through the trail manager. The trail has gentle grades traveling through farm land and woods with several scenic bridges crossing streams.  
Be alert for trail damage from rain, wind and vehicle crossings and for rough road crossings. Stay to the right and pass on the left; gain the attention of travelers before you pass them from behind. Cyclists and skaters are encouraged to wear helmets.  
No unauthorized motor vehicles are allowed on the trail. No alcoholic beverages are allowed on the trail. All wildlife should be viewed and not handled.  
Parking areas, water, fountains, restrooms, and picnic shelters are located five to eight miles apart along the fifty-one mile trail—see Mileage Table and Maps for locations. Restrooms and water available approximately April 15 to October 15. Garnett depot is open year round.  
Mileposts are located every mile and are shown on the maps. These are the original milepost locations and do not account for the trail's current route around I35 (0.44 mi) and under US169 (0.06 mi). Location of missing mileposts are shown with yellow dots.

